

GREETINGS FROM CROSS ISLAND FARMS

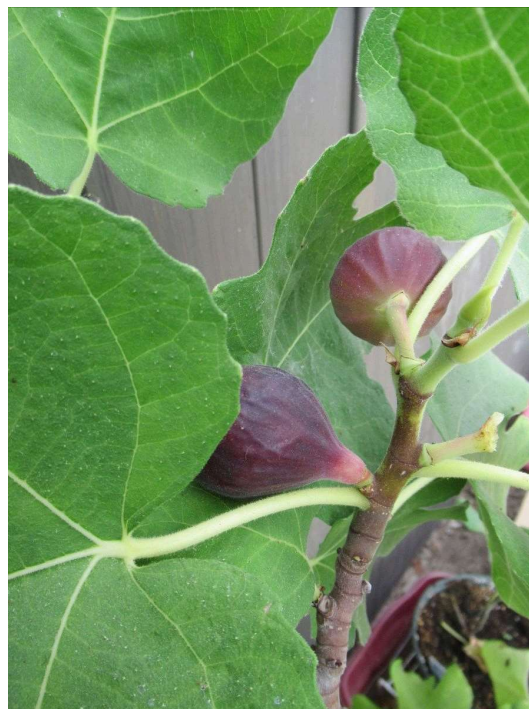


WHAT'S COVERING THE GROUND



From Mid-summer on, we like to plant cover crops where there is bare ground to enhance the soil life and keep the ground covered with something living. In late July, after harvesting garlic, we planted a combination of buckwheat and millet. Before the buckwheat set seed, we weed whacked its flower heads and allowed the millet to continue growing. After several frosts, the millet will be killed before it goes to seed, and will provide a straw-like mulch to cover the

WHERE ARE THE FIGS



Figs are not hardy enough to withstand our winters, so Dani keeps them in pots in a solar-heated greenhouse during the growing season and puts them in our basement for the winter enclosed in white plastic bags. The bags are necessary because the first year she placed 8 fig plants in the basement and went down in December to check if they need water, each plant had been completely consumed by field mice including the roots. Duane Smith of Seaway Cold Hardy Grapes suggested the white plastic wraps which have kept the mice away ever since.

WHAT'S BEING HARVESTED



This year's annual vegetable garden is yielding an abundance of winter squashes: acorn, butternut, spaghetti and carnival. We sell them retail at the farm stand inside our front porch and will wholesale them in quantity to anyone interested.

WHAT'S BLOOMING



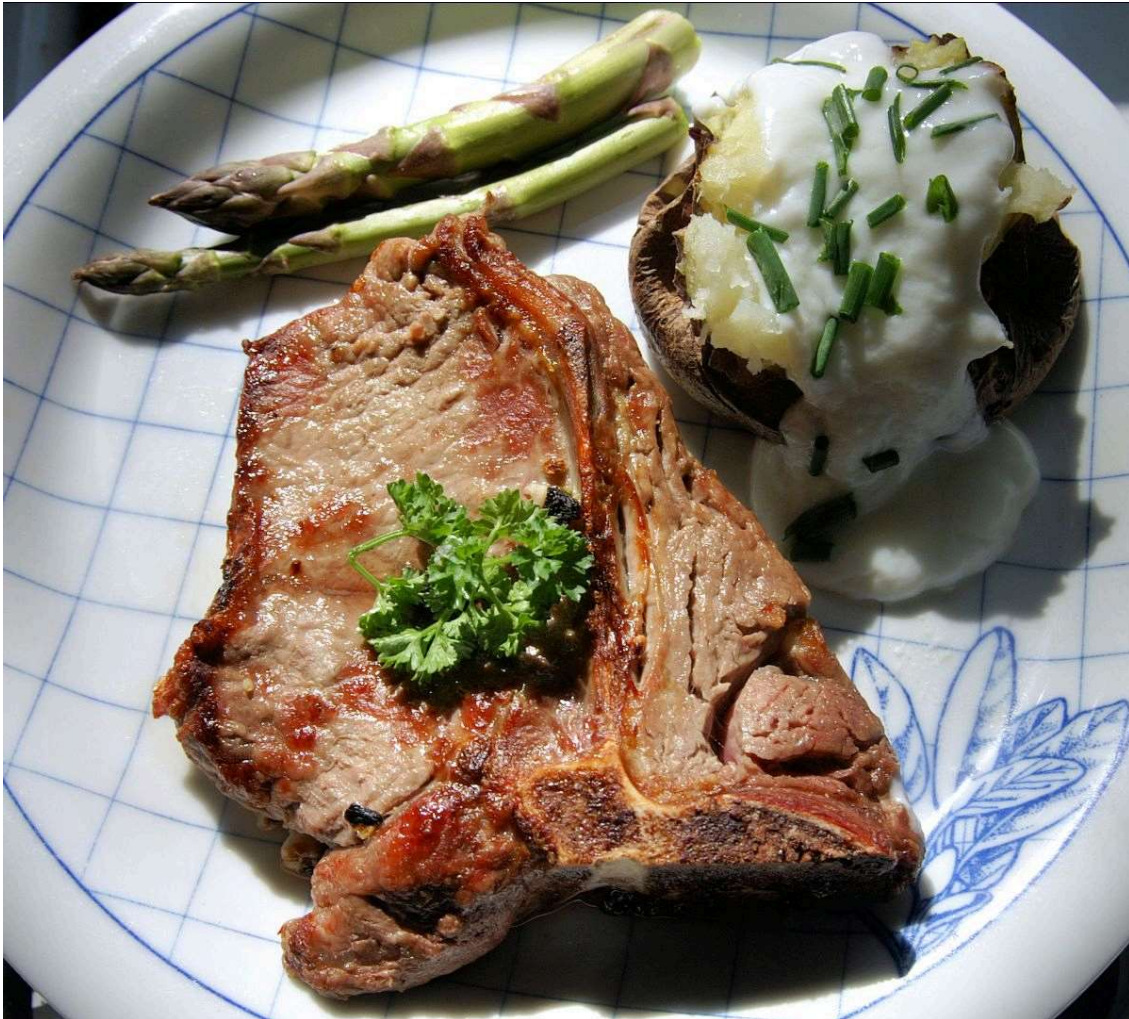
Native wildflowers like these wild asters and domesticated cultivars like these gorgeous and edible day lilies are some of the flowers blooming now in the forest garden. It's important to have flowers blooming from as early in the season to as late in the season as possible so there is a continuous source of food (nectar and pollen) for pollinating insects. That way you insure that these invaluable helpers will be around to pollinate your fruit trees and berry bushes when they come into bloom

WHAT'S BEING BUILT



the Edible Forest. We call it the “Hobbit House”. It is an octagonal building topped with an accessible cupola which offers an aerial view of the Forest Garden. Pictured here are three visitors who took a tour of the garden and experienced the treat of climbing up for the over-the-top view.

WHERE'S THE BEEF



Just a reminder that we are harvesting a steer early next month. If you are interested in a mixed quarter or half, please contact the farm. And of course we always have USDA-inspected cuts available for sale at the farmstand.

WHAT'S COMING UP

On Saturday, September 23rd, Dani will have a table at the 2023 **Adirondack Harvest Festival**, located at the **Essex County Fairgrounds, Westport, NY**. If you are in the area, stop by and say hi!

the Home-Scale Forest Garden Show to potential donors.

HAVE A HAPPY FALL SEASON

Dani Baker

Owner [Cross Island Farms](#) | Creator [The Enchanted Edible Forest](#) | Author [The Home-Scale Forest Garden: How to Plan, Plant and Tend a Resilient Edible Landscape](#)

44301 Cross Island Road
Wellesley Island, NY 13640
danibaker@crossislandfarms.com
315-482-3663



Copyright © *2022* *|Cross Island Farms|*, All rights reserved.

Our mailing address is:

The Enchanted Edible Forest at Cross Island Farms
44301 Cross Island Rd
Wellesley Island, NY 13640-4157

[Add us to your address book](#)

Want to change how you receive these emails?
You can [update your preferences](#) or [unsubscribe from this list](#).

